

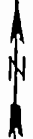
PLAT / V-SUPP/2
DATE / L-2002 / 11-02 / 11-02 / 11-02
PB / 170 / PG 8-23

PRELIMINARY (SUBJECT TO CHANGE)

CRESTVIEW

PHASE II

GRID NORTH (SUNSHOT)



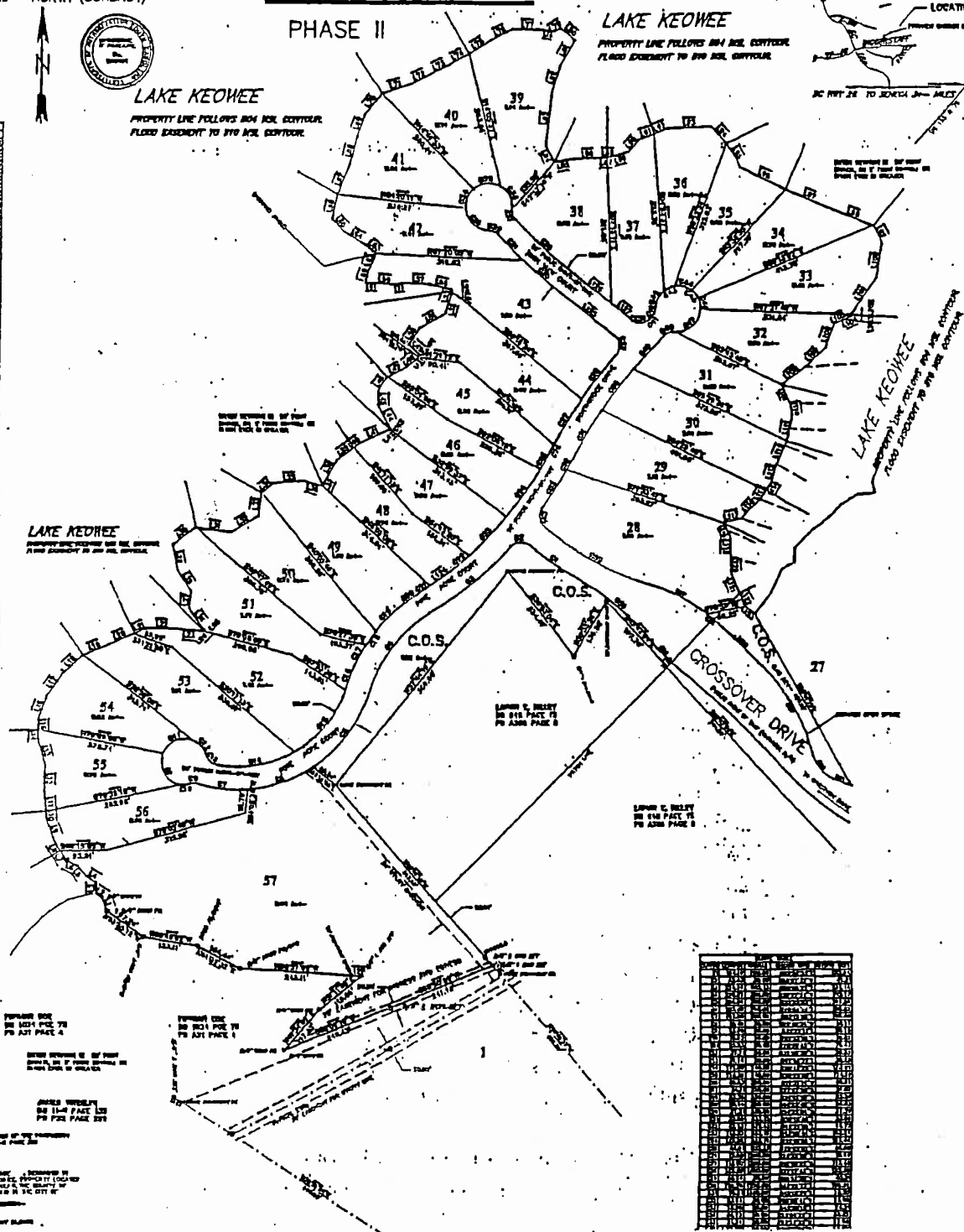
NO.	DESCRIPTION	NO.	DESCRIPTION
1	STATE OF ILLINOIS	1	STATE OF ILLINOIS
2	STATE OF ILLINOIS	2	STATE OF ILLINOIS
3	STATE OF ILLINOIS	3	STATE OF ILLINOIS
4	STATE OF ILLINOIS	4	STATE OF ILLINOIS
5	STATE OF ILLINOIS	5	STATE OF ILLINOIS
6	STATE OF ILLINOIS	6	STATE OF ILLINOIS
7	STATE OF ILLINOIS	7	STATE OF ILLINOIS
8	STATE OF ILLINOIS	8	STATE OF ILLINOIS
9	STATE OF ILLINOIS	9	STATE OF ILLINOIS
10	STATE OF ILLINOIS	10	STATE OF ILLINOIS
11	STATE OF ILLINOIS	11	STATE OF ILLINOIS
12	STATE OF ILLINOIS	12	STATE OF ILLINOIS
13	STATE OF ILLINOIS	13	STATE OF ILLINOIS
14	STATE OF ILLINOIS	14	STATE OF ILLINOIS
15	STATE OF ILLINOIS	15	STATE OF ILLINOIS
16	STATE OF ILLINOIS	16	STATE OF ILLINOIS
17	STATE OF ILLINOIS	17	STATE OF ILLINOIS
18	STATE OF ILLINOIS	18	STATE OF ILLINOIS
19	STATE OF ILLINOIS	19	STATE OF ILLINOIS
20	STATE OF ILLINOIS	20	STATE OF ILLINOIS
21	STATE OF ILLINOIS	21	STATE OF ILLINOIS
22	STATE OF ILLINOIS	22	STATE OF ILLINOIS
23	STATE OF ILLINOIS	23	STATE OF ILLINOIS
24	STATE OF ILLINOIS	24	STATE OF ILLINOIS
25	STATE OF ILLINOIS	25	STATE OF ILLINOIS
26	STATE OF ILLINOIS	26	STATE OF ILLINOIS
27	STATE OF ILLINOIS	27	STATE OF ILLINOIS
28	STATE OF ILLINOIS	28	STATE OF ILLINOIS
29	STATE OF ILLINOIS	29	STATE OF ILLINOIS
30	STATE OF ILLINOIS	30	STATE OF ILLINOIS
31	STATE OF ILLINOIS	31	STATE OF ILLINOIS
32	STATE OF ILLINOIS	32	STATE OF ILLINOIS
33	STATE OF ILLINOIS	33	STATE OF ILLINOIS
34	STATE OF ILLINOIS	34	STATE OF ILLINOIS
35	STATE OF ILLINOIS	35	STATE OF ILLINOIS
36	STATE OF ILLINOIS	36	STATE OF ILLINOIS
37	STATE OF ILLINOIS	37	STATE OF ILLINOIS
38	STATE OF ILLINOIS	38	STATE OF ILLINOIS
39	STATE OF ILLINOIS	39	STATE OF ILLINOIS
40	STATE OF ILLINOIS	40	STATE OF ILLINOIS
41	STATE OF ILLINOIS	41	STATE OF ILLINOIS
42	STATE OF ILLINOIS	42	STATE OF ILLINOIS
43	STATE OF ILLINOIS	43	STATE OF ILLINOIS
44	STATE OF ILLINOIS	44	STATE OF ILLINOIS
45	STATE OF ILLINOIS	45	STATE OF ILLINOIS
46	STATE OF ILLINOIS	46	STATE OF ILLINOIS
47	STATE OF ILLINOIS	47	STATE OF ILLINOIS
48	STATE OF ILLINOIS	48	STATE OF ILLINOIS
49	STATE OF ILLINOIS	49	STATE OF ILLINOIS
50	STATE OF ILLINOIS	50	STATE OF ILLINOIS
51	STATE OF ILLINOIS	51	STATE OF ILLINOIS
52	STATE OF ILLINOIS	52	STATE OF ILLINOIS
53	STATE OF ILLINOIS	53	STATE OF ILLINOIS
54	STATE OF ILLINOIS	54	STATE OF ILLINOIS
55	STATE OF ILLINOIS	55	STATE OF ILLINOIS
56	STATE OF ILLINOIS	56	STATE OF ILLINOIS
57	STATE OF ILLINOIS	57	STATE OF ILLINOIS

LAKE KEOWEE
PROPERTY LINE FOLLOWS 80% 80% CENTERLINE
FLOOD EASEMENT TO 10% 80% CENTERLINE

LAKE KEOWEE
PROPERTY LINE FOLLOWS 80% 80% CENTERLINE
FLOOD EASEMENT TO 10% 80% CENTERLINE

LAKE KEOWEE
PROPERTY LINE FOLLOWS 80% 80% CENTERLINE
FLOOD EASEMENT TO 10% 80% CENTERLINE

LAKE KEOWEE
PROPERTY LINE FOLLOWS 80% 80% CENTERLINE
FLOOD EASEMENT TO 10% 80% CENTERLINE



PLAT PREPARED FOR:
CRESTVIEW CONDOMINIUM, INC., ILL.

CONTRACTOR:
CRESTVIEW CONDOMINIUM, INC., ILL.

DATE:
11-02-02

SCALE:
AS SHOWN

REVISIONS:
1. CHANGE FROM 11-02-02 TO 11-02-02

NOTES:
1. ALL CONVEYANCES TO BE FILED WITH DEED RECORDS.
2. RECORDS TO BE KEPT AT THE OFFICE OF THE DEED RECORDER.
3. RECORDS TO BE KEPT AT THE OFFICE OF THE DEED RECORDER.
4. RECORDS TO BE KEPT AT THE OFFICE OF THE DEED RECORDER.

1	STATE OF ILLINOIS
2	STATE OF ILLINOIS
3	STATE OF ILLINOIS
4	STATE OF ILLINOIS
5	STATE OF ILLINOIS
6	STATE OF ILLINOIS
7	STATE OF ILLINOIS
8	STATE OF ILLINOIS
9	STATE OF ILLINOIS
10	STATE OF ILLINOIS
11	STATE OF ILLINOIS
12	STATE OF ILLINOIS
13	STATE OF ILLINOIS
14	STATE OF ILLINOIS
15	STATE OF ILLINOIS
16	STATE OF ILLINOIS
17	STATE OF ILLINOIS
18	STATE OF ILLINOIS
19	STATE OF ILLINOIS
20	STATE OF ILLINOIS
21	STATE OF ILLINOIS
22	STATE OF ILLINOIS
23	STATE OF ILLINOIS
24	STATE OF ILLINOIS
25	STATE OF ILLINOIS
26	STATE OF ILLINOIS
27	STATE OF ILLINOIS
28	STATE OF ILLINOIS
29	STATE OF ILLINOIS
30	STATE OF ILLINOIS
31	STATE OF ILLINOIS
32	STATE OF ILLINOIS
33	STATE OF ILLINOIS
34	STATE OF ILLINOIS
35	STATE OF ILLINOIS
36	STATE OF ILLINOIS
37	STATE OF ILLINOIS
38	STATE OF ILLINOIS
39	STATE OF ILLINOIS
40	STATE OF ILLINOIS
41	STATE OF ILLINOIS
42	STATE OF ILLINOIS
43	STATE OF ILLINOIS
44	STATE OF ILLINOIS
45	STATE OF ILLINOIS
46	STATE OF ILLINOIS
47	STATE OF ILLINOIS
48	STATE OF ILLINOIS
49	STATE OF ILLINOIS
50	STATE OF ILLINOIS
51	STATE OF ILLINOIS
52	STATE OF ILLINOIS
53	STATE OF ILLINOIS
54	STATE OF ILLINOIS
55	STATE OF ILLINOIS
56	STATE OF ILLINOIS
57	STATE OF ILLINOIS

John R. Hamrick
Owner
Broker In Charge

864-886-0098
864-886-0075 Fax
864-653-1821 Voice Mail
864-883-2832 Home
Email: jhamrick@earthlink.net

John Hamrick Real Estate, Inc. 1-800-361-4904